

ScaleRCHelis.com Light Controller Windows Install



Windows 8 and 8.1 do not require the driver to be installed. Please proceed to the Guino Dashboard Install section on page 4 to complete the install.

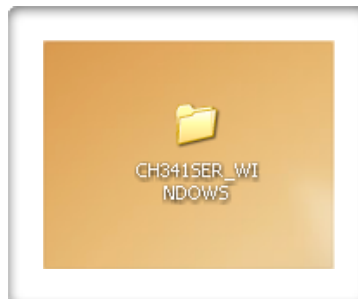
Setting up your Windows PC:

For Windows XP, Vista and 7:

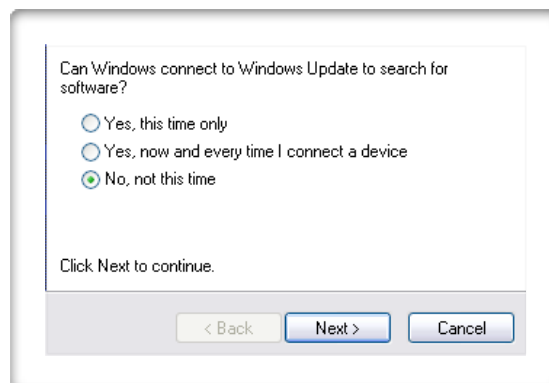
Download the drivers from here:

<http://www.scalerlights.com/downloads/CH341SER.ZIP>

Unzip the downloaded files to your desktop and you should now have a folder called CH341SER_WINDOWS on your desktop.



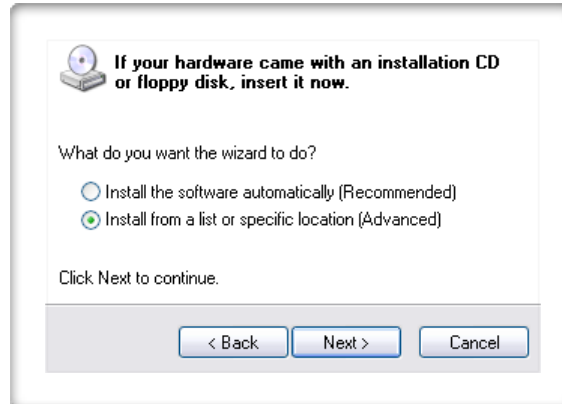
Do not install the driver using the included installer. Instead, plug in your Light Controller to your PC and the Driver wizard will start. Once it notifies you it can not find a driver, select the option to not search Windows Update for software and click Next.



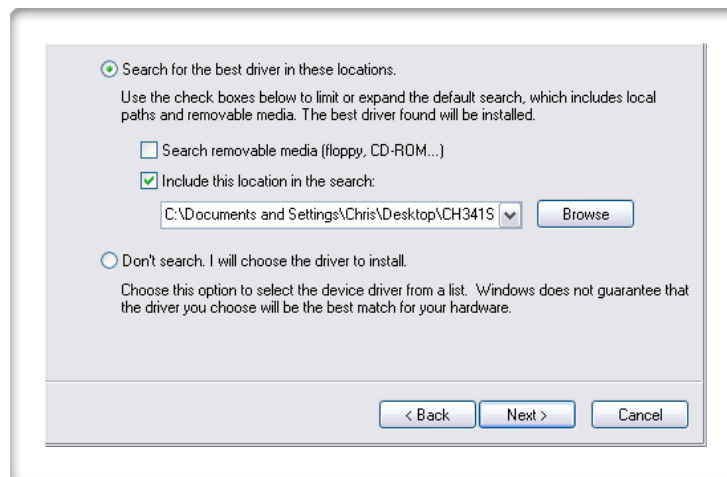
ScaleRCHelis.com Light Controller Windows Install



Click: Install from a List or Specific Location then click Next



Select Search for the best driver in these locations, then check: Include this location in the search. Browse to the folder with the drivers on your Desktop. Click Next.



Now your driver should be installed.

Now we will verify the COM port the light controller is connected to.

WinXP - Go to Start -> RUN and type in devmgmt.msc and hit enter.

Vista / Win 7 - Go to Start -> type into the search box devmgmt.msc and hit enter.

ScaleRCHelis.com Light Controller Windows Install

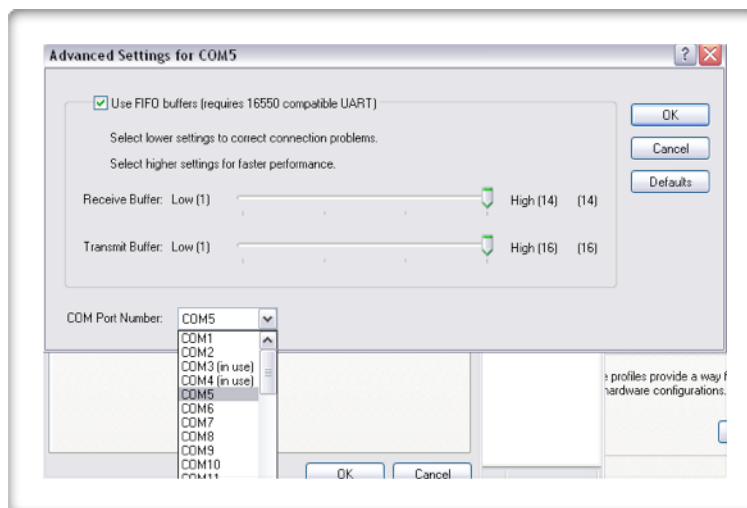


Windows 8 - Press the Windows+R Key combination and type devmgmt.msc into the Run box and hit enter.

Now that your device manager is open, you should see the CH340 listed under COM Ports. Note the COM port it is using.



If the COM port is 10 or higher you will need to right click on the USB-SERIAL CH340 and go to properties, then the Port Settings Tab, look for the Advanced button and click it. Now change the COM port to a Open Port 9 or less in order for the controller to talk with the GUI.



You may now delete the Driver folder on your desktop.

ScaleRCHelis.com Light Controller Windows Install



GUINO Dashboard Install

The GUINO dashboard can be downloaded from the website on the left side. Select the Windows version to download. After downloading, unzip the files to your Desktop and you should now have a folder called Guino for Windows. We are now going to move this folder to the C: drive. Click the folder and hit Control-X key combination to cut the folder. Go to My Computer then to your C: Drive and hit Control-V key combination to paste the folder to this location(or where ever you want to save the program).

Go into the Guino for Windows folder and find GUINO.exe, hit the Control-C key combination (copy the file) then go back to your Desktop and right click and select Paste Shortcut. This is how you launch the Guino Dashboard for programming your controller.

You are now ready to connect to the light controller. Please download the User Manual for Connection instructions and programing.